



ELEGANT EUROPEAN TRANSITIONAL HOUSE PLAN

- Volume great room and vaulted dining create open, elevated living spaces
- Private main-floor primary suite with vaulted ceiling and direct laundry access
- Outdoor living with fireplace

THIS PLAN FITS ON LOTS 1, 4, 5 & 8



5,253 SQ. FT.



6 BEDROOMS

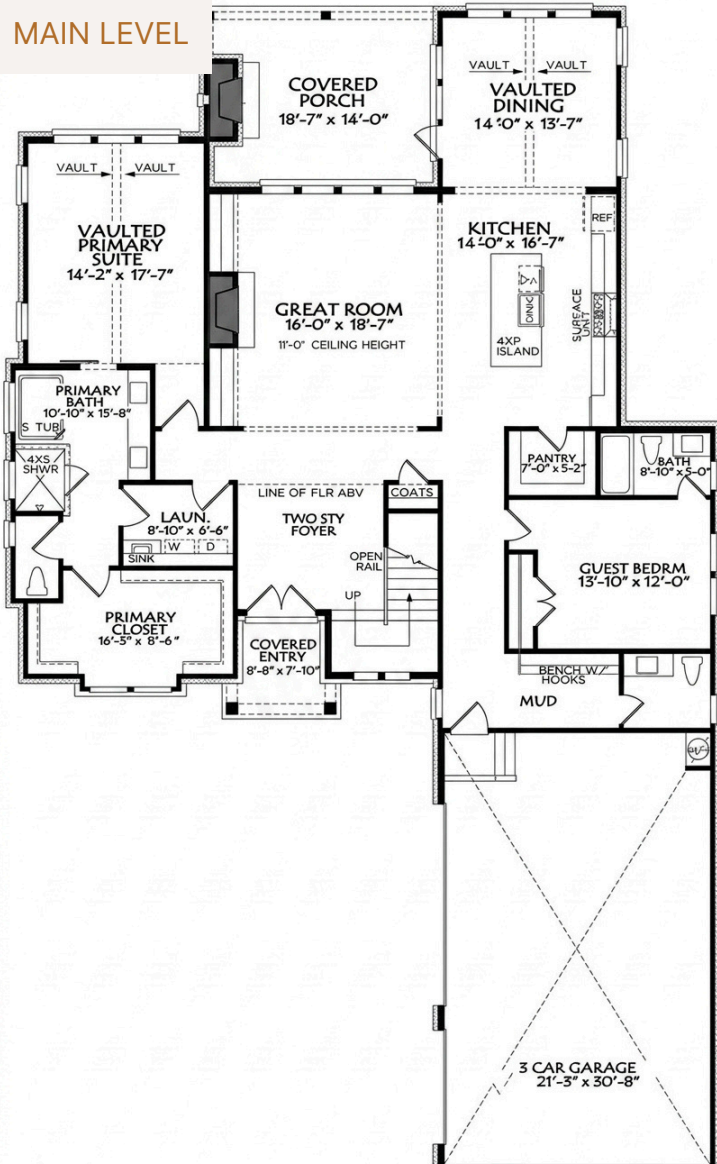


7 BATHROOMS

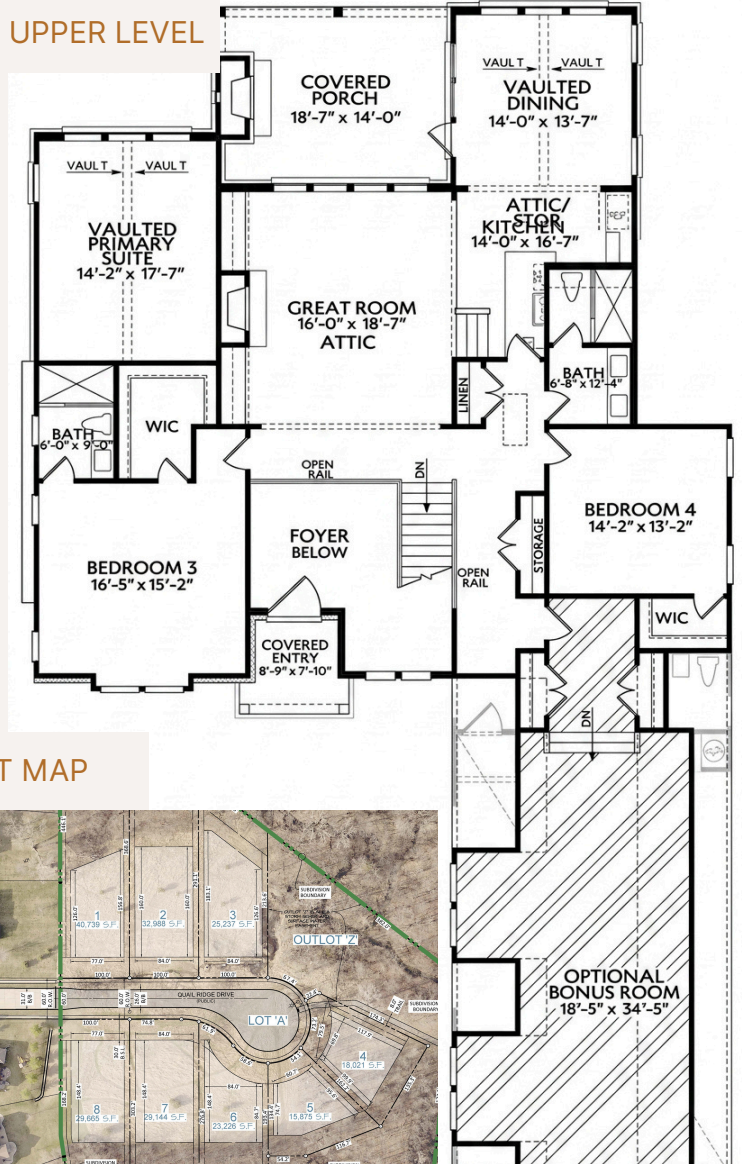


3-CAR GARAGE

MAIN LEVEL



UPPER LEVEL



PLAT MAP

